

C4000 Kent range of bulk combination cold water meters

Two great meters in one



C4000 combination cold water meters

Combining two outstanding Elster metering technologies in one extremely compact unit, the C4000's innovative in-line design delivers highly accurate bulk flow metering for applications with large variations in flow rate, helping to ensure optimum revenue collection.

Key features

- Two inductive registers for improved output performance and security
- High turndown ratio
- Highly accurate bulk flow metering for applications with large variations in flow rate
- Designed to maximise revenue collection
- Compact, in-line construction for easy installation
- Available in sizes from 50mm to 100mm
- Longer wear life for optimum accuracy
- Meets Class B approval for the primary Woltmann meter and performs to Class C for the secondary V220 volumetric meter

Available in a range of four sizes and suitable for flow rates up to 250 m³/h, the C4000 features an innovative in-line design which delivers significant benefits, not only at installation but throughout its working lifetime. Offering the benefits of inductive register technology and combining the performance of both the H4000 and V210 range of meters, the C4000 measuring range ensures maximum revenue collection. The C4000 complies with all relevant international quality standards.

Compact, cost-effective, dependable

With a compact in-line design that simplifies the specification process by eliminating the need to differentiate between left or right-handed by-pass meters, the C4000 also features an easy-change metering insert, carrying both primary and secondary metering modules. This can be removed as a complete assembly, significantly reducing the time required for calibration, maintenance or replacement. As with all Elster meters, the product is designed and manufactured to rigorous quality standards for trouble-free operation – whatever its working environment. The C4000's superb design offers many features which increase its life cycle and reduce costs, including wear-resistant jewelled rotor bearings, tungsten carbide thrust pads and stub spindles with factory-potted moisture resistant electrical connections.

bearings, tungsten carbide thrust pads and stub spindles with factory-potted moisture resistant electrical connections.

Information with intelligence

To deliver a complete metering system that addresses key efficiency objectives for water providers, the C4000 is designed to provide the level of information demanded by today's revenue management applications. To achieve this, the product offers a range of intelligent features, such as leakage alarms, data logging and tariffs. The meter is also fully compatible with Elster's Emeris range of intelligent meter reading systems, enabling the product to play an important role in revenue management, as well as improving customer service.

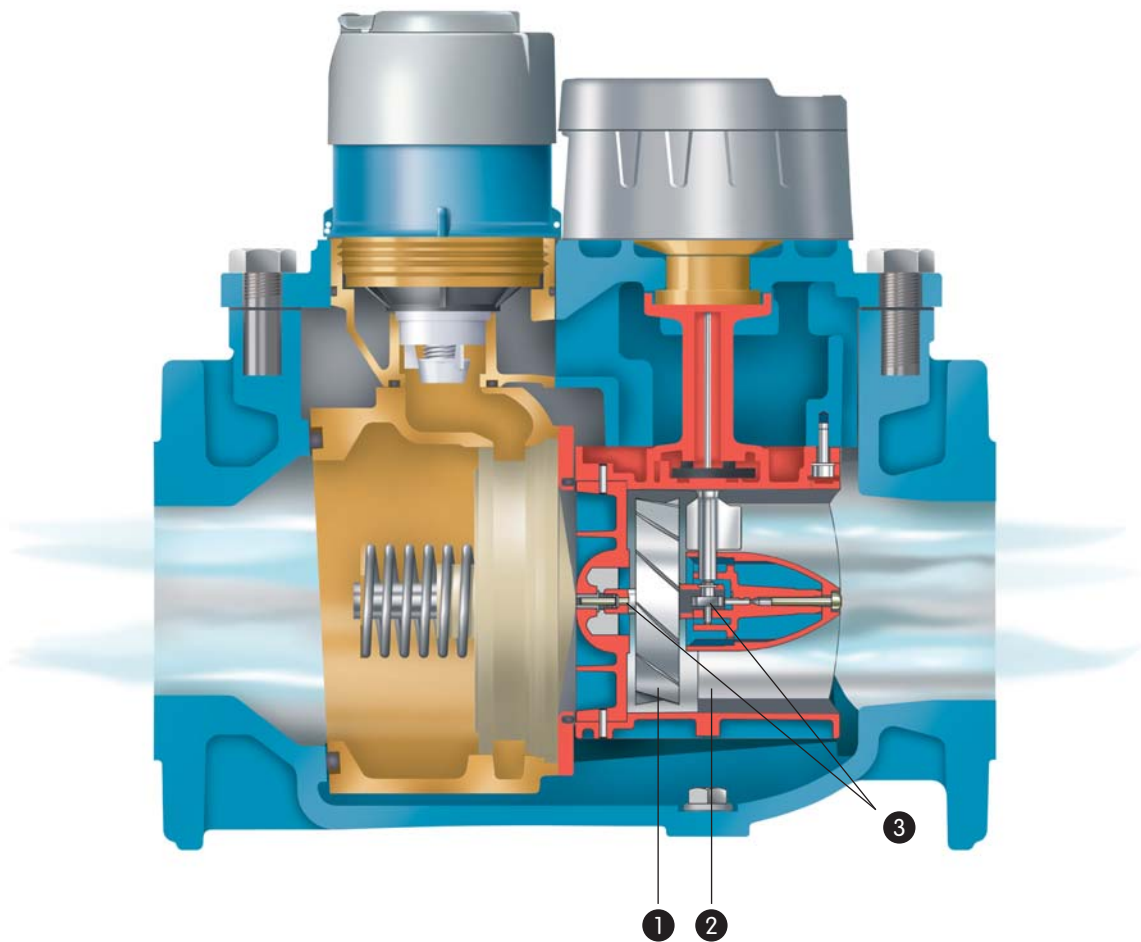
Enhanced communications and security

Using an inductive register to deliver enhanced communications performance and tamper-proof security, the C4000 provides effective protection against fraud. Compatible with Emeris PR6 and PR7 inductive pulse transmitters, the product features both high- and low-speed bi-directional pulse capabilities as standard, and is fully compatible with other common ancillary devices including data loggers and AMR systems.

In-line strainer

The use of an Elster in-line strainer is recommended to protect the rotor and help reduce the effect of turbulence.

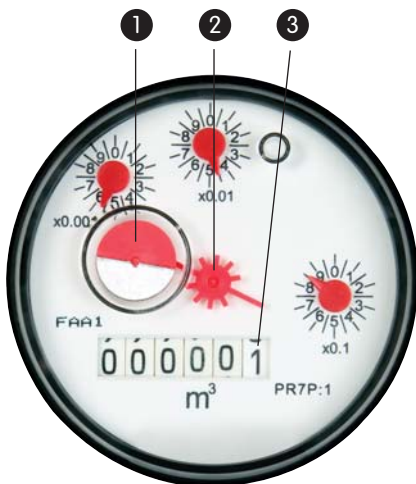




C&I inductive register

- 1 Inductive target for bi-directional pulse communications
- 2 Star tell-tale for easy-to-see flow detection
- 3 Easy to read display – 6-figure display for sizes 50mm to 100mm

- 1 Low mass rotor with hydrodynamic thrust relief
- 2 Maximum length flow straightening vanes
- 3 Hard surface rotor bearings – tungsten carbide and synthetic sapphire



About Elster Group

A world leader in advanced metering infrastructure, integrated metering, and utilisation solutions to the gas, electricity and water industries, Elster's systems and solutions reflect over 170 years of knowledge and experience in measuring precious resources and energy. Elster provides solutions and advanced technologies to help utilities more easily, efficiently and reliably obtain and use advanced metering intelligence to improve customer service, enhance operational efficiency, and increase customer benefits. Elster's AMI solutions enable utilities to cost-effectively deliver, manage, and conserve the life-essential resources of gas, electricity, and water. Elster has over 7500 staff and operations in 38 countries in North and South America, Europe, and Asia.

For additional information, visit www.elster.com

WEEE producer identification number:
WEE/EJ0221XT/PRO

Elster Metering Limited
130 Camford Way
Sundon Park
Luton
Bedfordshire
LU3 3AN
United Kingdom
T: +44 (0)1582 846400
F: +44 (0)1582 564728
water.metering@gb.elster.com
www.elstermetering.com

Copyright © 2008 Elster Group
All rights reserved.
No part of the publication may be reproduced in any material form without the written permission of the Elster Group except in accordance with the provisions of the Copyright, Designs and Patents Act 1988.

The Company's policy is one of continuous improvement and the right is reserved to modify the specifications without notice.